

SAFETY FIRST:

If you are collecting the equipment for someone else please make sure this sheet is given to the equipment user to read. In accordance with Health and Safety in Employment Act requirements, this sheet should be given to the site supervisor if the equipment is being hired for use at a commercial worksite so that the information is available to all users.

Required Safety Equipment



Ear Muffs



Hard Hat



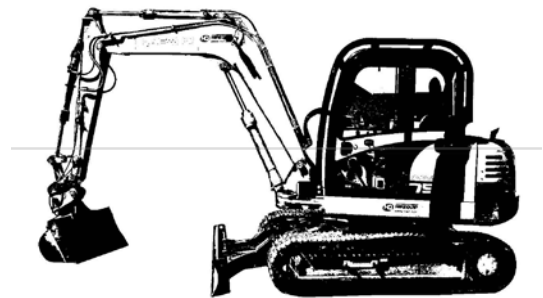
Boots



Protective Clothing



Visual Inspection



Pre-Start Checks and Safety

- ! Fuel tank is full (diesel)
- ! Correct oil levels / engine and hydraulics (with rams closed)
- ! Correct water level
- ! Check grease points lubricated
- ! Check for hydraulic and engine oil leaks
- ! Check correct buckets for job
- ! Operate on even and level ground only
- ! Check the worksite before commencing work for underground services
- ! Ensure the machine is sized for the job
- ! Keep machine level when operating
- ! Do not allow inexperienced people to operate machine
- ! Keep people away from worksite
- ! Do not overload bucket
- ! Do not leave engine running or with boom in the air when unattended or out of drivers seat
- ! Do not allow people to ride on machine
- ! Ensure you have a minimum of 4 metres clearance when operating close to overhead wires
- ! Keep clear of beams, branches and other people on site etc
- ! Take extreme care on slippery surfaces and when loading and unloading unit onto trailers or trucks
- ! Do not use in confined areas

When Operating

NOTE: This sheet covers most models we have although some will differ slightly

- Operate this machine on even and level ground only
- The dozer blade (if fitted) is always considered to be the front of the machine
- Adjust and fasten the seat belt
- Raise control lever lock/s when mounting and dismounting the machine
- Familiarize yourself with the operations of the levers
- Ensure the correct bucket is fitted for the job

Starting procedure

- Move throttle lever to 1/3 throttle
- Cold start / turn key to glow position and hold for 10 seconds
- Start engine (NOTE: some models require the control lever lock arm to be raised to start engine)
- Check warning lamps are out and all gauges are within their operating range
- Return throttle lever to idle position and let engine warm up for 5 minutes

Stopping and After Use

- Park machine in a safe place
- Lower bucket and blade onto the ground
- Raise control lever lock/s (some models will still allow the tracks to operate with control lever lock on)
- Move throttle lever to idle position and allow engine to cool down for 3 minutes
- Move throttle lever to the stop position
- Turn off ignition