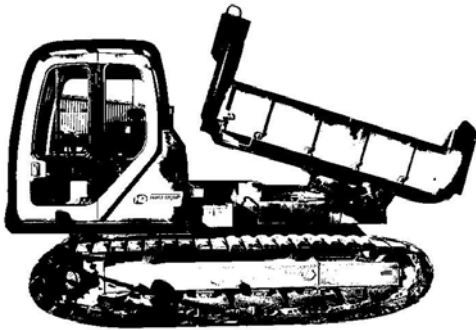


### SAFETY FIRST:

If you are collecting the equipment for someone else please make sure this sheet is given to the equipment user to read. In accordance with Health and Safety in Employment Act requirements, this sheet should be given to the site supervisor if the equipment is being hired for use at a commercial worksite so that the information is available to all users.



### Required Safety Equipment



Ear Muffs



Hard Hat



Boots



Protective Clothing



Visual Inspection

### Pre Start Checks and Safety

- ! Check engine & hydraulic oil levels
- ! Check fuel tank is full (diesel)
- ! Check engine coolant level
- ! Always drive machine in a responsible manner
- ! Never use machine on a steep slope
- ! Never overload machine
- ! Only experienced operators should use this machine
- ! Check grease points lubricated
- ! Check for hydraulic and engine oil leaks
- ! Ensure the machine is sized for the job
- ! Keep people away from worksite
- ! Do not allow people to ride on machine
- ! Ensure you have a minimum of 4 metres clearance when operating close to overhead wires
- ! Keep clear of beams, branches and other people on site etc
- ! Take extreme care on slippery surfaces and when loading and unloading unit onto trailers or trucks
- ! Do not use in confined areas

### When Operating

Fasten and adjust the seat belt  
Familiarize yourself with the operation of all control levers  
Always operate machine at throttle and control drive speeds by the further you push on the 2 drive levers  
Drive the machine around the site by pushing or pulling on the 2 drive control levers

**Slew models:** Always take care with the direction of travel as once you slew the machine 180° the drive controls will work in reverse!

Always remain stationary while the tray is being loaded

Drive the machine to the desired dumping location

Release the dumping lock and raise the tray to tip your load out

Always fully lower dump tray before travelling around on site

### Starting procedure

Move throttle lever to 1/3 throttle  
Cold start / turn key to glow position and hold for 10 seconds  
Start engine (NOTE: some models require the control lever lock arm to be raised to start engine)  
Check warning lamps are out and all gauges are within their operating range  
Return throttle lever to idle position and let engine warm up for 5 minutes

### Stopping and After Use

Park machine in a safe area  
Lower tray to the full down position  
Move throttle lever to idle position and allow engine to cool down for 3 minutes  
Move throttle lever to the stop position  
Turn off ignition